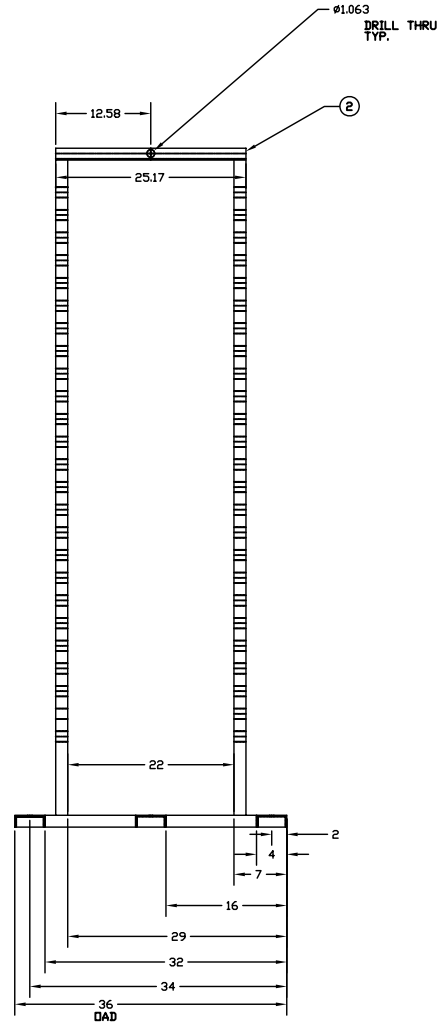
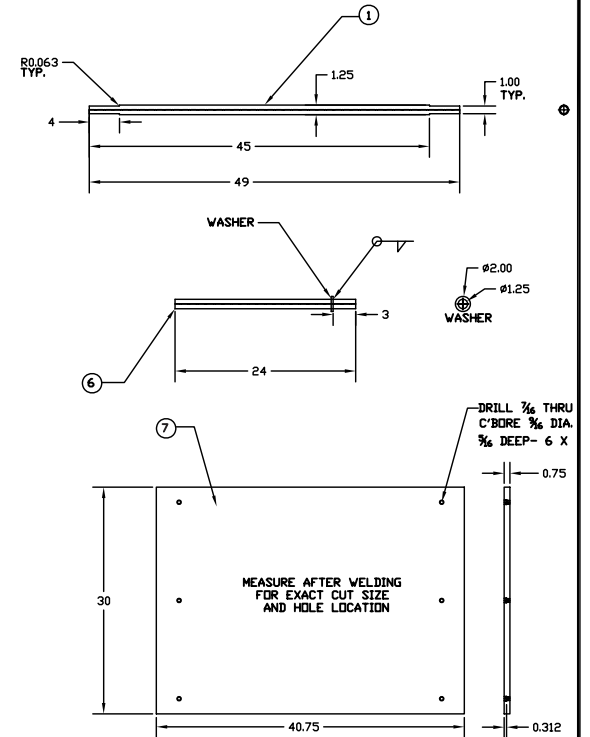


#	QTY.	INCHES	TOTAL WT.
1	1	49	17
2	2	39	18
3	4	347	156
4	2	60	27
5	3	123	55
6	2	60	22
7	1		12



NOTES:
 1. PAINT ALL ITEMS BLACK EXCEPT PINS AFTER ASSEMBLY
 2. Pins should measure 30" each, total length needed = 60"
 (modified from 48 total 01/11/2011)

CUSTOMER REFERENCE DATA			
DATE	BY	APPROV.	DATE
SCALE: 1/8"=1"			
S/O			

